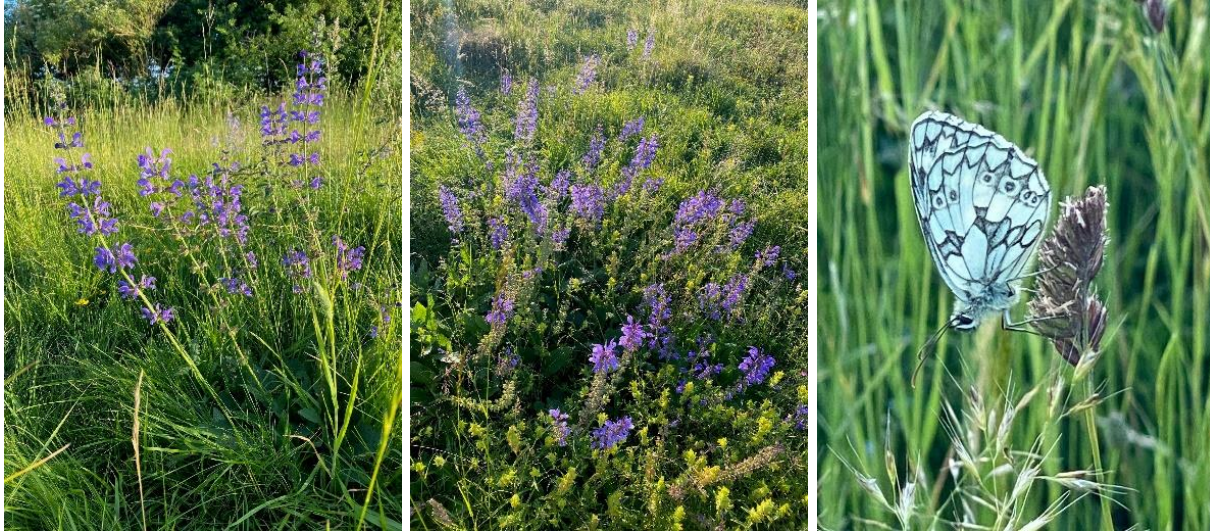


Salvia pratensis (Meadow Clary)

at Stonesfield Common

Survey on 25 June 2024

Members of Wychwood Flora Group present:
Genny Early



Meadow clary on Stonesfield Common had 210 flowering spikes in 2024 (compared with 770 in 2023). The reduction in flowering spikes did not appear to be due to slug, rabbit or deer damage, but possibly a result of the cold, wet spring and early summer. The increasing spread of locations of flowering plants across the Common will reduce the vulnerability of the plant overall.

Management

A cow and three calves came late to the Common compared with other years in December. In mid January they were taken back to the College for TB testing, all OK. The three calves returned to the Common around the end of January and remained there until the start of May. Almost all of the time the cattle were on the Common the cricket pitch (flood meadow) was flooded so they didn't have access to that area until the last couple of weeks that they were here.

Location	Numbers of plants, clumps, flowering spikes	Comment
SP 38950 16290	4 flowering spikes 10 plants	Cattle salt lick location 3 years ago, heavily trampled during the winter to create bare ground
SP 38983 16250	26 clumps, 9 large plants non-flowering, 164 flowering spikes (compared with 688 last year)	Large area of Meadow clary plants, usually fenced but not fenced this year
SP 39034 16271	1 clump, 12 flowering spikes	
SP 39084 16286	Approx 20 plants 1 flowering spike eaten off	Bank planted by Gill Barrett/GE
SP 39082 16314	1 clump, 6 flowering spikes	
SP 39105 16347	8 plants flowering, 9 non flowering plants, 23 flowering spikes	Patch by cleared scrub
SP 39071 16350	11 non-flowering plants	Patch above bench planted by Gill/GE

Birds observed and heard: Skylarks, Yellowhammers, Swallows, Goldfinches



Genny Early
for the Wychwood Flora Group.

Photos: G Early